



RFID Global Solution's

SmartDoor™

SmartDoor™
Designed by RFID
experts who
understand your
business needs

- Rugged
- Durable finish
- Single or double door configurations
- Installs quickly
- Easy access to all components
- Adjustable antenna mounts
- Supports visual and audio alert devices
- Customized colors

The modular mounting solution that fits your requirements.

Inexpensive, durable and reliable reader system, easy to install and maintain

The SmartDoor™ is a versatile enclosure system designed to mount and protect RFID equipment and accessories at dock doors and doorways.

The SmartDoor™ is constructed of industrial-strength, extruded aluminum. Each unit is light weight and durable enough for toughest environments and are capable of supporting several hundred pounds.

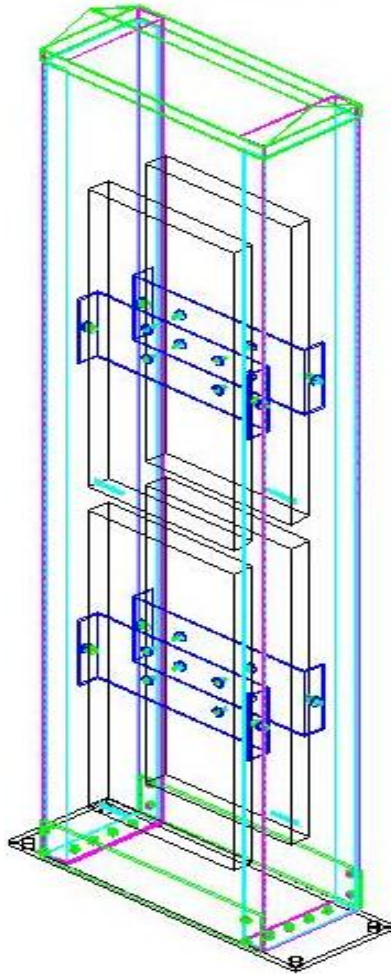
The SmartDoor™ is highly adaptable and may be used with any RFID manufacturer's equipment. Each unit comes with pre-drilled screw holes for mounting readers and antennas, as well as running cables and power cords. Cable channels hide and protect wires. Light indicators and other sensing devices may be easily attached. Antennas may be easily canted, raised, or lowered based on your design needs. A 'quick-change reader tray' provides rapid equipment upgrades or replacement.

Available in almost any color and with clear or tinted facings.



SmartDoor™ at a dock door portal.

Learn more about RFID Global Solution's products and services by calling our sales team at (866) RFID-123 or email us at sales@rfdgs.com



Adaptable

Units may be put back to back in environments with adjacent portals. Suitable for indoor and outdoor use.

Strong, Durable Construction

Made from the same industrial gauge aluminum that secures windows in place on skyscrapers.

Easy to Install

The DDS™ is designed to be installed by one person, providing a standard, repeatable solution with lower deployment costs than other comparable units.

Esthetically Pleasing

Available in anodized (clear, bronze, and black) or painted finish (any color). Trade-marked corporate colors may be duplicated with permission.

Optional DDS Covers

Clear or tinted Polycarbonate facings to help protect your valuable equipment are also available. They may even be customized into a sign using graphics, logos, and words.

Warranty

The RFIDGS SmartDoor™ is warranted against defects in workmanship and materials for a period of 1 year (12 months) from date of shipment, provided the product remains unmodified and is operated under normal and proper conditions."

Physical Characteristics & Specifications

Composite

Material: 6063 T5 extruded aluminum

Dimensions:

Frame: 8"W x 19"D x 83"H

Base: 24"W x 8"D

Weight: 75lbs.

Visit us at www.rfdgs.com

RFIDglobal
S O L U T I O N